

Joy Squared

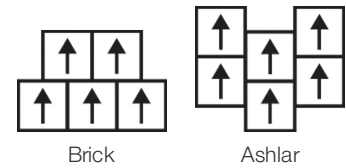
Coleção	Joy Squared	
Número Do Produto	0993V	
Construção	Heavy Commercial Luxury Vinyl Tile	
classe	Class III, Type B	
Acabamento	ExoGuard+®	
	U.s.	Metric
Dimensões Nominais	24 in w x 24 in l	61 cm w x 61 cm l
Dimensões Reais	24.00 in w x 24.00 in l	60.96 cm w x 60.96 cm l
Espessura Da Camada De Uso	20 mil (0.02 in)	0.51 mm
Espessura Total Do Produto	0.098 in	2.5 mm
Perfil De Borda	Borda Quadrada	
Installation Type	Dry Back	
Instalação	Direct Glue	
Adesivo Recomendado	S150-95 Resilient Tile Spray, 4200 Resilient Tile 4 Gallon, 2200 Resilient Tile 4 Gallon or 4151 Multi-Use Premium 4 Gallon	

Empacotamento

Peças Por Caixa	17 pcs	
Área Por Caixa	68 sq ft	6.32 sq m
Peso Por Caixa	57.79 lbs	26.21 kg



Método De Instalação Recomendado



Produtos Coordenados

LVT: Joy Squared 12x48

Desempenho + Teste

Resistência Ao Calor (Astm F1514)	Passes
Resistência À Luz (Astm F1515)	Passes
Resistência A Produtos Químicos (Astm F925)	Passes
Coeficiente De Atrito (Astm D2407, Resistência Ao Deslizamento)	≥0.5, meets the recommended static coefficient of friction for ADA walking surfaces

Test Reports may be included or listed by the manufacturing/inventory style number as opposed to the noted selling style number.

Garantias

[15 Anos Comercial Limitada](#)  
[Commercial 15 Year Underbed Bond Warranty](#)

Diversity, Equity & Inclusion

We believe all humans are equal. Individually and collectively, we need to proactively create and promote opportunities that give everybody an equal footing in life. We nurture an environment where every voice and perspective can be heard, and proactively promote accessibility and inclusivity inside our network and beyond. One proof point is our ability to meet the criteria of the Social Fairness pillar of the Cradle to Cradle Product Standard. At Shaw Industries, we promote supplier participation that is reflective of Shaw's diverse customer base and local community. More than 42% of our spend\*\*\*\*\* is with small and diverse businesses. We believe having a strong Supplier Diversity Program is strategic for bringing more innovation to our businesses and openingnew markets for growth.

Atributos + Certificações

Health & Wellbeing

Material Ingredient Transparency

Health Product Declaration (HPD) | 1000 ppm Disclosure

Climate Impact

Environmental Product Declaration (EPD)

3rd Party Certified De Acordo Com ISO 14025, EN 15804, & ISO 21930:2017

Total Recycled Content

30% (Pre-Consumer 30% | Post-Consumer 0%)

Global Product Assessment

Environmental Guarantee\* | Through Our Environmental Guarantee, Shaw Pledges to Transport And Recycle Any Shaw Manufactured Resilient Within The United States And Canada At No Cost to The Customer.

FloorScore® | Certificado

CE Marking (EN 14041) | Certificado 3rd Party

Country of Origin | United States

Crédito De Contribuição

MR Credit: Divulgação e otimização de produtos de construção  
Ingredientes materiais - Opção 1: Relatório de ingredientes materiais

MR Credit: Divulgação e otimização de produtos de construção  
Declarações ambientais do produto - Opção 1: Declaração ambiental do produto (EPD)

Crédito de EQ: Materiais de baixa emissão  
Opção 1: cálculos de categoria de produto

Health Product Declaration (HPD) | 100 Ppm Disclosure

3rd Party Certified in Accordance with ISO 14025, EN 15804, & ISO 21930:2017

FloorScore Certified

Informação Adicional

\* To learn more about the recyclability of our products and our Environmental Guarantee, please visit [shawcontract.com/sustainability](#).

Installation Guidelines

Maintenance Guidelines

Please visit [www.shawcontract.com](#) for the most current warranty information. Specifications are subject to nominal manufacturing variance. Material supply and/or manufacturing processes may necessitate changes without notice.

This product is an exclusive design and may not be duplicated in any manner. Use of this design in the creation of another product design is also strictly prohibited.

\*\*\*\*\*Allowable spend is domestic (US) spend in categories in which we have diverse suppliers from which to choose. Compared to non-allowable spend which includes categories in which we do not have domestic, small or diverse suppliers available to meet our needs.

Visit [shawcontract.com/testing](#) for more information.

## Available Colorways



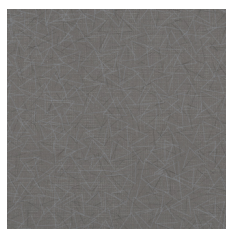
Snow Day 93100  
V2 - Slight Variation



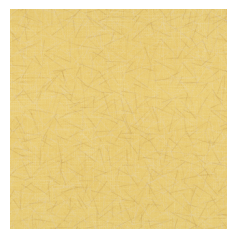
Beach 93160  
V2 - Slight Variation



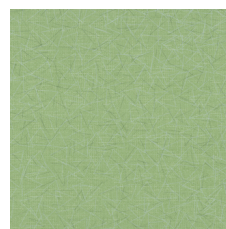
Playground 93250  
V2 - Slight Variation



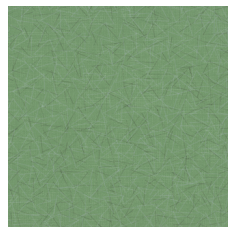
Song 93270  
V2 - Slight Variation



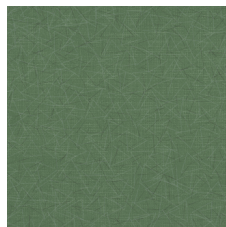
Sun 93290  
V2 - Slight Variation



Bouquet 93310  
V2 - Slight Variation



Park 93360  
V2 - Slight Variation



Grass 93375  
V2 - Slight Variation



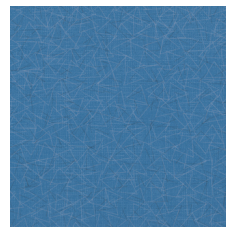
Treehouse 93385  
V2 - Slight Variation



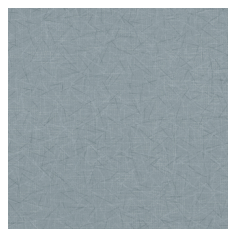
Spring 93390  
V2 - Slight Variation



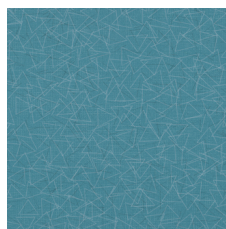
Sky 93405  
V2 - Slight Variation



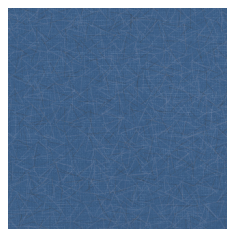
Pool 93410  
V2 - Slight Variation



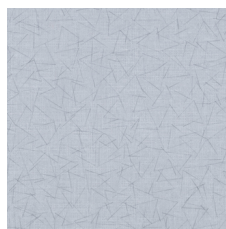
Bubble 93415  
V2 - Slight Variation



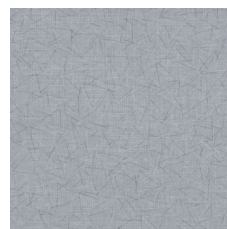
Summer 93470  
V2 - Slight Variation



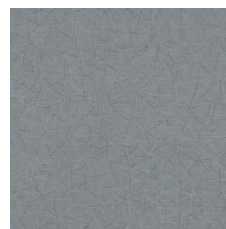
Snooze 93490  
V2 - Slight Variation



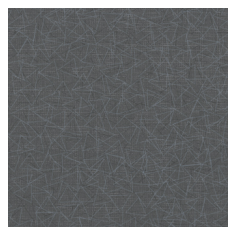
Holiday 93500  
V2 - Slight Variation



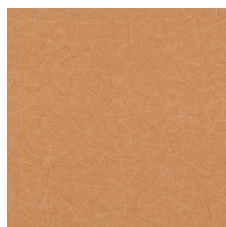
Tire Swing 93520  
V2 - Slight Variation



Bicycle 93560  
V2 - Slight Variation



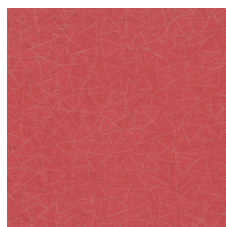
Firefly 93595  
V2 - Slight Variation



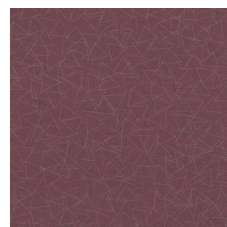
Firework 93680  
V2 - Slight Variation



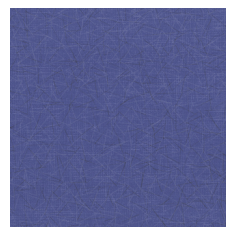
Backyard 93761  
V2 - Slight Variation



Balloon 93890  
V2 - Slight Variation



Carousel 93895  
V2 - Slight Variation



Sprinkle 93995  
V2 - Slight Variation

### Color and Visual Variation Index

Shade and texture variation is inherent in all resilient products and can vary significantly from piece to piece. Samples should be used to assess color.

V1



Uniform Appearance

V2



Slight Variation

V3



Moderate Variation

V4



Substantial Variation

